

Winter 2006

EXECUTIVE

President:

Terry Bishop-Stirling

Vice President:

Jeff Webb

Past President:

Joan Ritcey

Treasurer:

Larry Dohey

Secretary:

Melanie Martin

Councillors:

Debby Andrews

Vicki Barbour

David Bradley

Carman Carroll

Larry Coady

Linda Cullum

Rosemary Healy

Jim Hiller

Betty Jerrett

Glenn Keough

Veva Moulton

Joyce Montague

Robert Parsons

Ivy White Tong

Fran Warren

Fred Winsor

Doug Wells

Michael Wilkshire

Carla Wheaton

Sandra Wheeler

**Questions, comments,
letters to the Editor
and membership
inquiries may be
addressed to:**

NHS Office

P.O. Box 23154

Churchill Square

St. John's, NL

A1B 4J9

(709) 722 3191

(709) 739 6458

email:

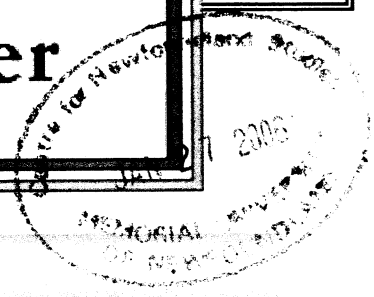
nhs@thezone.net

www.infonet.stjohns.nf.ca/providers/nfdhist

The Newfoundland Historical Society

1905 - 2006

Newsletter



President's Message

This fall the Newfoundland Historical Society marked our 100th anniversary with a look at our own history. This was a great excuse to begin to delve into our own files to look at the Society's accomplishments, changing priorities, memorable characters and occasional controversies. We thank all who helped make our September meeting so successful.

This month His Honour Lieutenant Governor Edward Roberts and Mrs. Roberts kindly opened their home to us in a reception to mark the anniversary. This is just the latest example of the interest and support we have received from His Honour. I am sure that in our century of history we have not had a more committed patron and I thank him on behalf of the Society.

In addition to our September meeting we held two lecture/book launches this fall. We thank Ches Sanger, Tony Dickinson and Ruby Gough for their wonderful presentations and our audience for their attention. Inside you will see our winter line-up. Please note the change of venue for the January lecture. Come join us at MUN's Music School for what promises to be a fascinating combination of music and history - you may even hear some fellow members sing!

This fall saw a lot of exciting activity at the Colonial Building. We welcomed several new neighbours - all organizations sharing a dedication to the history and culture of our province. We applaud the Provincial Government for its wise choice in using this most historic building to support the largely volunteer organizations who help preserve our heritage.

The NHS has moved into more spacious offices (and managed to fill twice the space quite easily). Please note that this has led to changes in our email address; we thank members for their patience during the transition. I want to especially acknowledge the great work of our office manager, Catherine Rice, who moved everything so efficiently. This task was an extra one to fit into her already full workdays and we all appreciate her cheerful manner and amazing organizational skills.

We thank all members who have renewed and welcome some new members to the Society. For those who have not had a chance to renew, please do so by the end of January. We count on your support to keep our office running and to help finance our programme. I wish you all a very happy and healthy 2006 and I look forward to seeing you in the new year.

Terry Bishop Stirling, January 2006

Committees 2005/06

Program

Melanie Martin, *Chair*
Terry Bishop-Stirling
Debbie Andrews
Larry Coady
Veva Moulton
Joan Ritcey

Finance & Membership

Larry Dohey, *Chair*
Rosemary Healy
Debby Andrews
Veva Moulton

History in the Schools

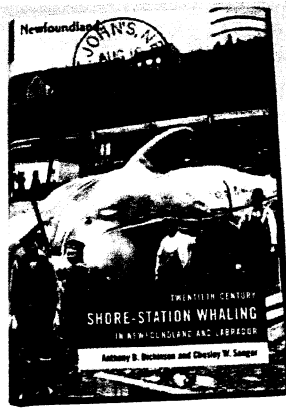
Jim Hiller
Fred Winsor

Publications

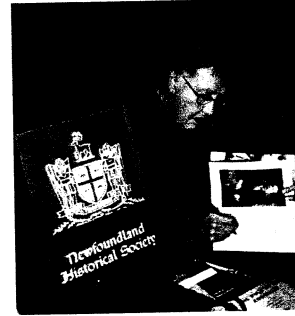
Linda Cullum, *Chair*
Jeff Webb, Editor,
Aspects
Joan Ritcey, Web Master
Michael Wilkshire,
Newsletter
http://www.infonet.st.johns.nf.ca/providers/nf_dhist/

Your Newsletter

If you have an item of news, an anecdote, a picture from the past, an old saying, an event of historical interest happening in your corner of Newfoundland and Labrador, why not share it with fellow members in your NHS Newsletter? Simply mail your contribution to the postal address on the first page or email it to nhs@thezone.net.



At the October 2005 meeting members were treated to a presentation by Tony Dickinson and Ches Sanger on their book *Twentieth Century Shore-Station Whaling in Newfoundland and Labrador*.



From the November 2005 meeting: Ruby Gough, after a very well-received talk, takes time to sign copies of her book on Robert Edwards Holloway.

Membership

COMMITTEE REPORT, FALL 2005

The membership committee consists of Rosemary Healy, Fred Winsor, Veva Moulton and Debby Andrews. Catherine Rice, our office administrator, has done a fine job of keeping track of membership status and answering questions from our committee.

The fall lecture series has been well attended and has brought new members into the Society. We've had 25 new members sign up this fall bringing our current membership to a total of 450. The ongoing challenge for our committee has been to have our members pay their membership. It seems that people aren't sure if they've paid up or not. What we've decided to do is to send a personalized reminder so that you will know if your membership is overdue and the amount owing.

The Society depends on your continued financial support to bring you the newsletter, the Newfoundland Quarterly, other publications and to hold monthly lectures and symposia.

Deborah Andrews, Chair, Membership Committee

Publications

COMMITTEE REPORT, FALL 2005

Another year has passed, and the NHS Publications Committee continues its work in a number of venues. Jeff Webb, with the assistance of Terry Bishop-Stirling and Linda Cullum, supports new and experienced authors in the creation of fascinating articles for *Aspects* in the *Newfoundland Quarterly*. This edition of the NHS Newsletter is under the editorship of Mike Wilkshire, a welcome new member of the Publications Committee. We'll see more of Mike in the future I'm sure. Catherine Rice, our office manager, provides the Committee with strong support in the production and distribution of both publications. Our hearty thanks to Catherine for her hard work on our behalf! In 2006, the NHS will be partnering in a new publishing venture with Gavin Will of Boulder Publications. Together we will produce a guide to Newfoundland history since 1500. The volume will include contributions from experts in the field, and will be aimed at a general readership in the province and beyond. We'll tell you more as the project moves along! Meanwhile, we are always interested in your ideas for *Aspects* or the Newsletter! Drop us an email or letter with your thoughts. Addresses can be found on the front page of this Newsletter. All the best for 2006 from the Publications Committee!

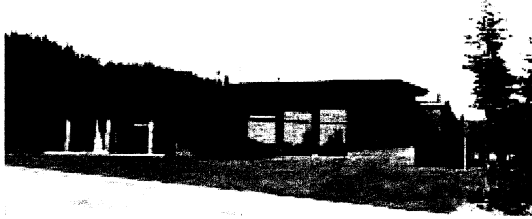
Linda Cullum, Chair, Publications Committee

ARTS AND EXPLORATION CENTRE OPENS

The Coast of Bays Arts and Exploration Centre was opened to the public this past summer in the Bay d'Espoir/South Coast region. The centre is described as a gateway to the region where visitors will be introduced to the region through a cultural exhibition, a video presentation and a demonstration of many life skills that were required by the early settlers of the Coast of Bays.

The centre will also be encouraging the growth of the visual and performing arts in the region. The craft store and art gallery provide a sales and awareness venture for the artists in the region. Workshops will also be held at the centre. Tour guides will take you through the exhibit hall, where you will see a birch bark canoe, visit the winter house, learn of Captain Cook, William Cormack, and much other information which will lead you to explore further the history of local communities in the Coast of Bays region. For further details visit: www.coastofbays.nl.ca/news/A&Ecentre.htm

Doug Wells



LIGHTHOUSE HERITAGE OF NEWFOUNDLAND AND LABRADOR

Lighthouses have served as critical aids to marine navigation for over a hundred years in Newfoundland and Labrador. With the advent of precise satellite-based navigation technology, however, the requirement for lighthouses has been deemed all but obsolete. Over the last 20 years, lighthouses have been automated and there has been increasing pressure on the Coast Guard to de-staff them as a cost saving measure.

The Lighthouse Society of Newfoundland and Labrador (LSNL) was founded in 1999 by a small group of lighthouse enthusiasts, community groups and heritage organizations with a keen interest in preserving the province's rich lighthouse heritage. Partly through the lobbying efforts of the LSNL, the Coast Guard has belatedly recognized that lighthouses have a strong cultural value in this province and today Newfoundland and Labrador has retained a significant number of staffed lighthouses. The role of the lighthouse keeper has also fundamentally changed - their primary duty today is to communicate the history and heritage of their various sites to the public.

The provincial government has also taken steps to recognize the heritage value of lighthouses and has identified the first Saturday in August as Lighthouse Day. In 2005, more community organizations than ever exploited funding available from the province in support of Lighthouse Day activities.

The LSNL was a key partner in the development of a Lighthouse Master Plan - prepared by TRACT Consulting Inc. with funding provided by Human Resources Skills Development Canada and the Atlantic Canada Opportunities Agency. Some 15 lighthouses have been targeted in the Master Plan as prime candidates for further development. The LSNL is now in the process of soliciting funding from various Government agencies to implement the recommendations of the Master Plan. Successful implementation of the Master Plan would go a long way to meeting the overall objectives of the Society to preserve the lighthouse heritage of Newfoundland and Labrador for future generations.

David Cumming

See also <http://www.unc.edu/~rowlett/lighthouse/nfld.htm> (Editor's note)

Check It Out

Newfoundland Studies

Back issues of the journal are available:

\$5.00 ea. - subscribers

\$7.50 ea. - non subscribers

Limited Edition Set of back issues \$160.00.

Tables of contents and searchable index available at www.mun.ca/nflds.

Order: nstudies@mun.ca
709-737-2144

Grade 8 History Course

This course and textbook, which started out as an NHS project, are now in place. An article in *The Independent* of Nov. 20-25 2005 reports a very enthusiastic reception. One teacher, Kellie Rodgers of St. Paul's School in St. John's, is quoted as saying "...this is one of the best courses I've had an opportunity to teach." And Lauren Dwyer, one of her students, gives the course an A, noting "You're getting to learn about places that you've actually seen."

Congratulations to those who worked so long and hard at this!

Reminder

If you haven't already done so, it would be helpful if you could send your email address to the office (see p. 1) so that we can circulate updated information quickly.

Correction

In the Spring 2004 issue of our newsletter, page 3, we published a letter by Miss Jean Lewis that referred to Margaret Giovannini's actions on the night of the 1929 South Coast tsunami. This was an error. Mrs. Giovannini came to Newfoundland in 1937. It was Nurse Dorothy Cherry who contributed so much to the tidal wave rescue efforts in 1929.



NHS Events Calendar



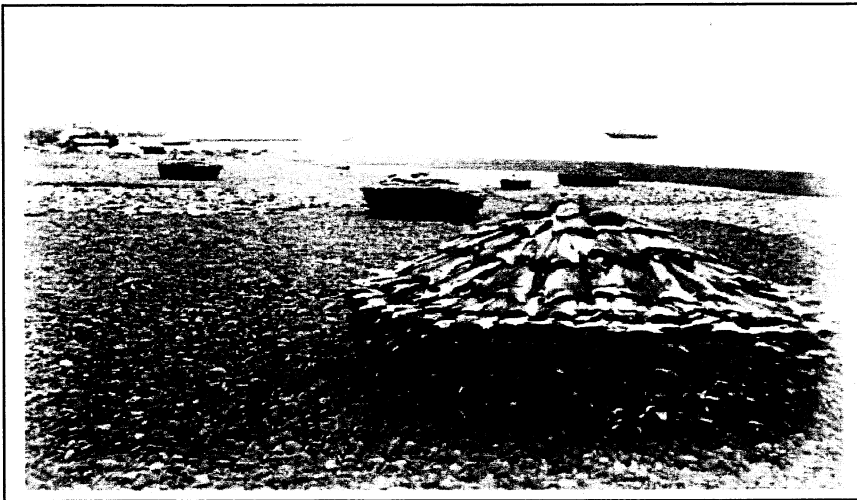
Winter 2006

Thursday, January 26th at 8.00 pm - Tom Gordon and Jane Leibel from Memorial University's School of Music present "Newfoundland's Nightingale: The Life and Times of Georgina Stirling as Marie Toulinguet". *Please note that this event will take place at the D.F. Cook Recital Hall, School of Music, Memorial University. Free parking available in Lot 15 (between Burton's Pond and the School of Music).*

Thursday, February 23rd at 8.00 pm - Terry Carlson: "Up Against the Prison Wall - Crisis and Reform in the Newfoundland Penal System in the Commission of Government Era." Location: Hampton Hall, Marine Institute.

Thursday, March 30th at 8.00 pm – Speaker to be announced later. Location: Hampton Hall, Marine Institute.

Thursday, April 27th at 8.00 pm - George Story Lecture and the AGM. Speaker to be announced later. Location: Hampton Hall, Marine Institute.



"Bank fish on beach at Grand Bank": photograph in the Archives of the Centre for Newfoundland Studies, M.U.N. From the Joseph Laurence Album, Coll-119, image 1.120. Probably taken in the mid-1880s.

MEMBERSHIP FORM

NAME _____
ADDRESS _____
TELEPHONE _____
E-MAIL _____

Membership Fees: Regular \$28 / Life \$400 / Institutional \$24 / Student (no Quarterly) \$15

Donations are always welcome!

Fee _____ Donation _____ Total _____

Visa Card Number _____ Expiry Date _____

Signature _____

Payment may be made by VISA, cheque or money order to the Newfoundland Historical Society. Please send this form with your payment to the address on the front page. US subscribers please pay in US funds to cover postage. International subscribers please pay 18 pounds sterling or Canadian equivalent.

NHS Office, P.O. Box 23154, Churchill Square, St. John's, NL, A1B 4J9